

Client-Side Detection

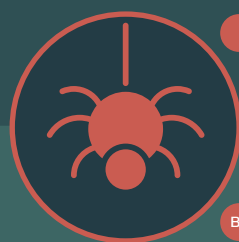
Proactive platform and SDK for real-time fraud & threat visibility

- Unique layered approach to fraud detection, independent of attackers' modus operandi.
- Real-time detection fully tailored to your organisation.
- Industry leaders in mobile threat research.
- Protecting millions of Tier-1 bank customers without customer journey impact.



Staying in control of fraud

Client-Side Detection is a proactive Online Fraud Detection solution with unique synergy between strong device intel, Mobile Threat Defence, behavioural analytics, driven by our industry-leading and ever-changing threat intel.



ANATSA

ANUBIS

ALIEN

ERMAC

CABASSOUS

BLACKROCK



GESTURES
TIMING
TYPING RHYTHM
GEO/IP
MALWARE



Mobile Threat Intel Visibility on threats

Our best-in-class knowledge about the mobile threat landscape is one of the driving forces behind our fraud solution. Our security experts continuously research how fraud operates and changes, preparing you for tomorrow's attacks.

Online Fraud Detection Visibility on fraud

The core of our solution is formed by a real-time detection platform with risk scoring feeds to your Fraud Scoring Engine through a powerful API and a portal to monitor fraud and to collaborate with ThreatFabric experts.

Frictionless sensors Visibility on devices

Powered by behavioral analytics we detect social engineering based fraud, fraud by malware and even provide visibility when these fraud types are used in a hybrid attack: Telephone Oriented Attack Delivery (Vishing + Android banking malware).

Get in touch for a demo or trial:

+31 20 8950650
info@threatfabric.com





Visibility on threats & fraud



Fraud by voice phishing



Fraud by malware



Fraud by bots



Account Opening fraud



Account Takeover fraud



On-Device Fraud

Benefits



Stay ahead of (un)known threats



Minimize losses from fraud



Highly layered detection



SCA based on behavioural analytics



Real-time fraud risk alerts



Enabling PSD2 & 3DS2



Device intel (web + mobile)

- GEO intelligence (IP, GPS, WIFI, BlueTooth)
- Strong device fingerprinting
- RAT sessions (AnyDesk, TeamViewer etc)
- On-call detection
- Browser dynamics (timing, form intelligence)
- Webinject + browser DOM monitor

"The layered detection sensors allow us to stay ahead of ever-changing fraud MO's. We love the easy integration with our transaction monitoring solution, reducing friction in authentication (MFA) and the overall UX using multiple detection sensors"

– Fraud Manager at ABN-AMRO bank, NL



Mobile Threat Defence

- Malware threat detection (known & unknown)
- Android forensics module (upload)
- YARA rule manager
- Runtime threats: Jailbreak, Debugging, Emulators
- Mobile Threat Intelligence service



Behavioural analytics

- Frictionless UX identity proofing enrichment
- Keystroke dynamics (typing rhythm long pauses)
- Being guided (aimless mouse movements)
- Swipe and motion (hesitation, duress, being guided)



SaaS or on-premises

- Azure, including 2FA support (SSO using Microsoft tokens)
- On-premises docker images on your hardware



Managed Service

- Rule updates
- Q&A fraud incidents
- Mobile Threat Intel reports
- Fraud intel reports (latest MO)
- Strategic reports